



IMPORTANT DATES:

- Oct. 15 Progress Reports sent home with students
- Nov. 2 Federal Impact Aid Cards sent home with students
- Nov. 20-25 Student Led Conferencing



The Raider Report



Stuart Crisman, Principal

Bill Rosen, Assistant Principal

October 2009

Ridgetop Junior High Web address: rijh.cksd.wednet.edu (do not type www)

Please plan to join us for Student-Led Conferencing just before the Thanksgiving break!

On one of the dates, November 20, 23, 24, or 25, your student will present to you and their homeroom teacher, the answers to four key questions they have been given:

- Who am I?
- What do I want to do in the future?
- What have I accomplished in school so far this year?
- What changes do I need to make to improve myself?



You will have time to ask questions, and discuss the plans your student is making during this 30 minute conference.

Starting now, and for the rest of 1st Quarter, students are creating "portraits" of who they are and what they see as their future. They are doing reflective thinking about what is driving their current success in their classes, what changes they need to make to improve, and what to keep doing well. Information from all of your student's teachers will be presented by your student.

During the week of November 2-6, your student and his/her homeroom teacher will be communicating with you to schedule the conference.

Once your conference is completed, you may fill out a slip indicating you would like a contact from one of your student's other teachers, or you can stop by at one of our two post-conference drop-in times where all staff will be available to answer questions. The two times are Monday, November 23, from 1:30 - 2:30, and Tuesday, November 24, from 12:30 - 1:30. Please attend your child's conference before coming to a drop-in time as the drop-in time does not replace the conference.

If you have questions, please feel to call Stuart Crisman, Principal, at 662-2905. We look forward to working with you in planning for your student's success.

Dates to Remember



- Oct. 8 Picture Re-take day
- Oct. 15 Progress Reports sent home with students**
- Oct. 20 Vision/Hearing Re-screening
- Oct. 22 PTSA General Membership Mtg., 6:00 p.m. in cafeteria
- Oct. 22 Band & Orchestra Concert, 7:00 p.m.
- Nov. 2 Federal Impact Aid Cards sent home with students
- Nov. 4 End of 1st Quarter
- Nov. 5 Federal Impact Aid Cards due
- Nov. 11 Veterans' Day Holiday
- Nov. 19 Report Cards sent home with students**
- Nov. 20, 23-25 Partnership Conferences**
- Nov. 26-27 Thanksgiving Holiday
- Dec. 8 Band & Orchestra Concert, 7:00 p.m.
- Dec. 9 Progress Reports sent home with students**
- Dec. 21-Jan. 1 Winter Break



RIJH Doors Unlock at 6:45 a.m.

The building opens for students at 6:45 a.m. Please do not drop off students prior to 6:45 a.m. as there is no one to supervise students at school this early. The doors will be unlocked at 6:45 a.m. and students may remain in the cafeteria until 7:05 a.m. until the halls are opened.

Emergency Contact for your Child

The first week of school you probably filled out and returned an Emergency Release Form that we use in case of disasters. Because the list of emergency contacts on this form can be long, we would only reference these forms in large scale emergencies. If you would like to have names added into our computer system so that some of these people can pick up your child from school for other reasons, please send a note with your child or email lynnez@cksd.wednet.edu. We need the name, their relationship to your child (e.g. friend, aunt, grandfather), and their phone number. We can list up to 4 names in the computer system.

Apple Health for Kids!

Did you know your children may be eligible for LOW COST health insurance? It's easier than ever to qualify for state-sponsored programs. To see if your family may qualify, check the chart below. Call toll-free 1-877-543-7669, Monday – Friday, from 8:00 AM to 5:00 PM, for further information and an application. Your children may qualify if your gross monthly income fits these levels:

Number of People In Family (includes parents and children)	Premium Based Medical Coverage Approximate Income per month (after deductions*)
1	Up to \$2,708
2	Up to \$3,643
3	Up to 4,578
4	Up to \$5,513
5	Up to \$6,448
More	Add \$750 for each additional family member.

* Note: Expenses such as child / elder care, child support paid, and work expenses may be deductible.

Applications are available in Ridgetop Jr. High's main office or contact Kim Johnson @ 662-2903. Additional information can also be found on the website: <http://fortress.wa.gov/dshs/maa/Eligibility/HealthyKidsNow.html>

“Ridgetop Cares” Fund

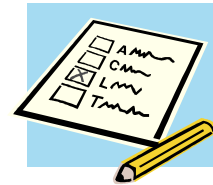
Do you know that there are students here at Ridgetop who can't afford school supplies, a P.E. uniform, or the fee to go on a class field trip? Ridgetop PTSA has established a fund to help out with the essentials that so many of us take for granted. We call this endeavor Ridgetop Cares and we're seeking monetary donations. To make a donation, write a check to RIJH PTSA and designate Ridgetop Cares in memo line. These may be turned in at the office. This program works through the generous contributions of those who have a little extra to share.

Requests for funding from Ridgetop Cares are confidential and made through a counselor, Mr. Lee or Mrs. Bogert. Working together we can make sure that every student is given an equal opportunity to be successful.

Federal Impact Aid Cards

Every year the District must apply for Federal Impact Aid funds from the U.S. Department of Education. These funds compensate CKSD for the loss of local tax dollars from tax-exempt federal property in the Silverdale and Bremerton area. The District must conduct a Federal Residence and Employment Survey on a yearly basis in order to obtain a current count of families in the District who live and/or work on federal property. On November 2, 2009, students will be bringing home the survey form used for this count. **It is important that all appropriate sections on the form be filled out completely and accurately and the form is signed and dated for each student.**

These funds benefit all of our students and are used for basic education programs District-wide (except for the special education portion, which is used directly for that program). Your cooperation in assisting the District in this matter is greatly appreciated.



New Voter Registration

If you are new to the area and wish to register to vote, you may pick up voter registration forms at any school. You may also register to vote online at:

www.kitsapgov.com/aud/elections/votereg.htm

A military spouse may register to vote as a resident of Washington State without affecting the military person's "non-resident military" status. To learn more, please contact the County Elections Office at (360) 337-7128.

When you Visit our School...

The Central Kitsap School District (CKSD) procedure for visiting schools is designed to ensure the safety of our students, staff, and volunteers. Effective immediately all school visitors must check in at the office, sign in, and get an ID tag. CKSD staff will wear badges that identify them by name and worksite or department.

We do not know of any threat to the schools but believe this to be a prudent measure to prevent unwanted or unauthorized persons from entering our buildings. We apologize if this causes any inconvenience but once we all become accustomed to wearing identification and checking in at the office it will become routine.

If you have any questions please feel free to call Stuart Crisman, Principal at 662-2900 or Patti Woolf, CKSD Director of Operations at 662-1616.

RAIDER PTSA UPDATE

RAIDER SPIRIT continues to grow. A big thank you to all who have turned in their memberships. Our current membership count is 117. We are looking to boost that number up toward 200. Please remember to join us at our monthly board meetings. These are held on the third Wednesday of each month, starting at 9:15 am in the staff lounge (remember to sign in at the office before attending the meeting). Our next General Meeting is October 22nd, at 6:00 pm in the cafeteria. Please join us.

This is an update on what your membership has provided for Ridgetop students and staff.

- Window Coverings
- Window Tinting
- Staff Appreciation
- Emergency Water
- Fun-with-a-Friend
- Staff Grants (books, magazines, media equipment)
- Golden Acorn
- Sports Banner Update
- Student and staff awards
- 100% Club

Other PTSA supported activities include Ridgetop Cares, Science Night, Open House, Raider Rush, and Raider Concessions.

Your PTSA currently has opportunities to chair or co-chair committees such as Membership, Staff Appreciation, Fundraising and Ridgetop Cares.

RIDGETOP RAIDER'S UMBRELLAS ARE NOW ON SALE

Available just in time for those rainy football games.
You can pick your up at our school store - \$18.00 each.



You may also pick up a SPIRIT SHIRT available in your class colors - make sure to have one before spirit week. \$8.00 each (\$9.00 XL).



We would like to thank all our wonderful volunteers who helped with Raider Rush, Open House, Backpack Stuffing, School Concessions, and our amazing All-District Dance. THANK YOU

If you have any questions or ideas please do not hesitate to contact one of our board members:

Treasurer and School store manager, Becky Congdon at drcongdon@pol.net;
Secretary, Maria Phillips at phillips_family@wavecable.com ;
Vice-President, Kathy Brobst at fishon5@q.com; or
President, Valerie Grahn at valeriegrahn@msn.com.

RIJH Volunteers Needed!!!

We would like to encourage you to join our POPs Program, Parents on Patrol; a wonderful opportunity to help keep our Raiders safe and happy during their school day. Your presence during their lunches in the cafeteria, before and after school in the parking lot, and at the entrance of our school, has a positive impact on our student's day. A friendly smile from a caring adult is not only appreciated by our kids, but also by our staff. Whatever works for you time ways; from hourly, daily, weekly, to bi-monthly, we appreciate any and all time you spend with our students. Please stop by the office or call me anytime during the school day for further information. Thank you.

Marjie Lingol, Volunteer Coordinator, 662-2961

Students Take the Lead

Ridgetop ASB Officers for 2009-10 are as follows:

President: John Leon-Guerrero
Vice President: Jasmine DeLeon
Secretary: Micaylla O'Leary
Treasurer: Bea Analupa
Press Secretary: Ashley Abenojar

We look forward to a great year working together.

Gifted/Highly Capable Program

Ridgetop Junior High has two mentors for gifted students, Rita Eklund, a humanities teacher, and Ron Garberg, a science teacher. Rita and Ron are available both before and after school for interested students and parents. If you have questions, please contact them at rtae@cksd.wednet.edu or rong@cksd.wednet.edu.

Student Sport Spectator Expectations

To ensure student safety and adequate supervision, the following guidelines have been developed for students attending sports events as spectators.

EXPECTATIONS:

- Students attending athletic contests need to either participate in a supervised school activity or leave campus until the game begins (3:30-3:45 for football; 3:00-3:15 for other sports).
- Students wishing to attend After Hours in the library while waiting for the game must use that time for focused study and have a note from a parent excusing them to attend the game.
- Students must get all of their materials needed for the evening by 2:15 p.m. because the gates will be locked and not raised.

CONSEQUENCES: Students found in a non-designated area (e.g., halls) without a pass will be:

- **1st offense**—Warned, given an explanation of the rules, and informed of the next consequences.
- **Further offenses**—Escorted out of the school and not allowed to attend the game.

Box Tops for Education

Ridgetop collects Box Tops for Education and Campbell Soup Labels. Box Tops can be found on a wide variety of General Mills products including Pillsbury, Yoplait, Hamburger Helper, Old El Paso, Betty Crocker, Kleenex, Cottonelle and Ziplock Brand. The money received from these goes to fund RIJH's Media Team.

Through the Campbell Soup Labels for Education Program, we can earn audio visual equipment, like DVD players, for classrooms. In addition to Campbell's soup, other product labels that help in this program are: Franco-American Gravies and Spaghetti O's, Campbell's Pork & Beans, Campbell's Tomato Juice, V8 Vegetable Juice, Campbell's Garlic bread, Goldfish Crackers, and Pepperidge Farm products. Lids from V8 Splash, V-fusion, drinks, and Prego pasta sauces also count as labels for this program. The entire label including the UPC is needed, not just the front of the labels.

Sign Up Now to Stay Informed

CKSD e-News enhances communication between the District, parents and community members. Sign up to receive periodic e-mails pertaining to District events and activities, emergency information, and important messages from the Superintendent. To subscribe, visit:

<http://enews.cksd.wednet.edu>. All subscriber e-mail addresses are kept confidential.

Ridgetop Cares Baskets

The PTSA would like to let every one know that raffle tickets for a variety of baskets can be purchased during conference days. Your generosity will help support students who may not be able to afford such things as school supplies, PE uniforms or field trips. If you would like to donate a basket or gift certificate for the raffle, please contact Valerie Grahm at valerie-grahm@msn.com or call Bonnie Bogert at 662-2943.



Colorguard is selling the Kitsap Card

Beginning Monday November 9, Ridgetop's colorguard team will have the Kitsap Card available to sell. This is their yearly fundraiser. The Kitsap Card provides you a discount when you shop at local merchants. The cost of the card is quickly recovered with your discounts! The cost of each card is \$25, and you do not have to pay sales tax. If you are interesting in purchasing a card or two, please e-mail Mrs. Sund at: sues1@cksd.wednet.edu, or stop by the colorguard table during the fall conferences.

CKSD changed its inclement weather guidelines last winter. In the future, if a school delay occurs on a Thursday morning, schools will be dismissed at the regular dismissal time (no Thursday early release).

Don't Miss...

November 19

Report Cards sent home with students

December 9

Report Cards sent home with students